



PATIENT FACT SHEET

Sentient Sculpt™ offers remarkably effective, non-invasive and well tolerated reduction of cellulite for all skin types and all ages.

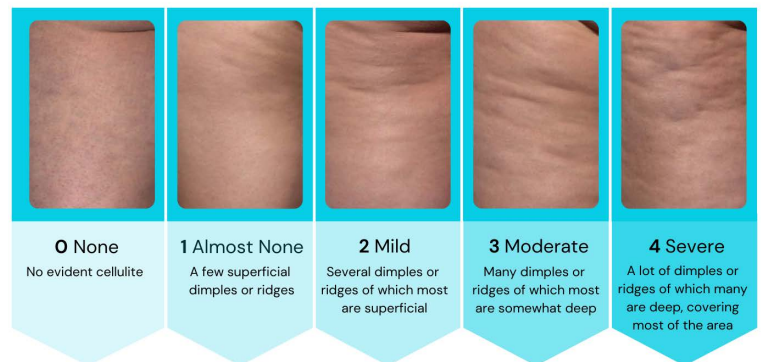
How does it work?

Sculpt™ uses 2.45 GHz energy to target fat and effectively reduce cellulite. 80% of Sculpt's energy is absorbed in the fat layer, working from the inside out. The diffusion of heat from the fat to the skin stimulates the remodeling of collagen, improving skin texture.



Will treatment be painful?

Sculpt targets fat more than any other non-invasive technology. Fat absorbs more of the 2.45 GHz energy than the skin, creating less heat and pain. Additionally, the innovative Sculpt handpiece provides a cooling effect as treatments are performed.



Study results have shown that 73% of patients went from moderate/severe cellulite to mild.

Treatment

Sculpt™ has two hand pieces for different depths of fat and target areas. Regardless of body type or shape, the **shallow handpiece** or **deep handpiece** can be selected by your practitioner for ideal results.



Your provider will keep the handpiece in constant motion during treatment to keep the skin cool. This massage technique provides extra comfort and helps disperse heat for best results in the treated area.

Will it work on cellulite in different parts of my body?

Sculpt™ addresses common problem areas on all skin types and all ages:

- Thighs and buttocks
- Knees
- Abdomen
- Arms
- Back and flanks

Benefits of Sculpt™

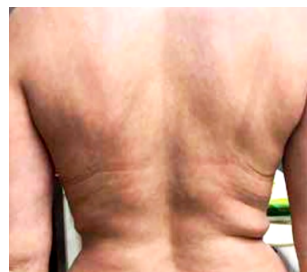
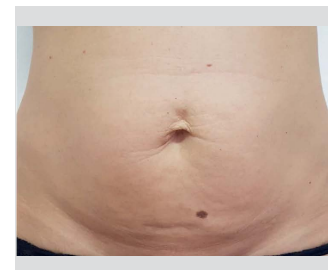
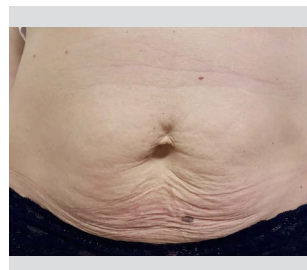
- Remarkable and effective, non-invasive treatment as comfortable as a hot stone massage
- Affordable
- Personalized for ideal results
- No downtime

Sentient Sculpt™ Results

BEFORE



AFTER



What Makes Sentient Different?

Our purpose is to bring a bold, new perspective to the aesthetic care industry. Our cutting-edge technology, sourced from around the world, offers treatments to help you be your most confident.

sentientlasers.com/sculpt 855.819.3781 info@sentientlasers.com

CONFIDENCE ASSURED™